



A SELECTION OF FAÇADES TO
HELP YOU BRING VISIONS TO REALITY

MAPLE

www.maplesunscreening.co.uk

CAR PARK BROCHURE

BRINGING VISIONS TO REALITY

VICTORIA STREET CAR PARK
LIVERPOOL

ABOUT MAPLE

Maple is a leading designer, manufacturer and installer of façades, weather protection and screening for building exteriors. Since 1983, we've been combining innovation, technical excellence and exceptional customer service to deliver projects that save energy, create visual impact and make buildings more comfortable for their occupants.

INDUSTRY EXPERTISE

Maple's products and services are making a difference to public sector buildings such as schools, universities and hospitals, and private sector projects such as hotels, leisure centres and retail parks. Our in-house design, production and installation experts support projects from their earliest stages to create beautiful, practical (and sustainable) architectural façades that meet the unique needs of our customers.

CUSTOMER FOCUS

We are committed to continuous improvement across all areas of our business, and aim to exceed client expectations with service that is individual and attentive. Our high satisfaction scores demonstrate that we always put our customers first with the sort of personal relationships that can only come from a family-run business committed to honesty, integrity and professionalism.

PASSION AND PEOPLE

We approach every project the same way, with the aim to exceed customer expectations at every stage. We have a can-do attitude, and work tirelessly to bring our clients' ambitions and visions into reality. Our focus on innovation and creativity means we are always at the forefront of technology and the latest thinking, while our commitment to put our people first has built one of the most loyal and capable teams in the business.

VICTORIA GATE CAR PARK



VICTORIA GATE CAR PARK

KEY FACTS

- £165m Victoria Gate has already been voted best shopping centre in the world
- Named Yorkshire Building of the Year for 2017 by the Royal Institute of British Architects
- RIBA also singled out Victoria Gate for its prestigious Yorkshire Award for 2017
- Maple created the façade of the adjoining car park, mirroring the unique diamond-shaped cladding of the centre that so impressed the judges

"Victoria Gate responds to the challenges of delivering a successful large-scale building with a consistent, crafted feel. It has used contemporary methods from design development to production, and extends the architectural discourse on design and production in the digital age."

RIBA

TIME SQUARE
CAR PARK



TIME SQUARE CAR PARK

- KEY FACTS**
- Striking architectural façades for eight-level car park
 - Design inspired by Warrington's local heritage
 - More than 1,700 powder-coated aluminium panels
 - Bespoke 'sliding' fixings for building tolerances and movement
 - Close partnership with architects and contractors
 - Every milestone met
 - Maple rated 'excellent' by architects

"We wanted to produce an individual design that was localised in the history of the area. Working with Maple helped us understand what could be done. I was particularly impressed with the attention to detail, from the gold colour to the hexagon design."

Leach Rhodes Walker, Lead Designer
Ka Yin Man

VICTORIA STREET CAR PARK



VICTORIA STREET CAR PARK

- KEY FACTS**
- Bespoke architectural façades transform the exterior design of a new car park in Liverpool
 - Empty site since old municipal buildings were destroyed in World War Two
 - Architects Leach Rhodes Walker were tasked with creating a 'sensitive' design that was 'in keeping with the surrounding context of the site'
 - The £6.5m project, which will include retail units, cafés and restaurants as well as 333 car park spaces, is part of a wider regeneration scheme for Liverpool city centre

"The proposed scheme has been designed to ensure its scale and massing is in keeping with the surrounding context. The contemporary design will provide high-quality car park facilities in the city centre."

Liverpool Council, Planning Report
Mayor Joe Anderson

NEW BAILEY CAR PARK



NEW BAILEY CAR PARK

KEY FACTS

- Former prison site transformed as Maple realise architect's vision to create award-winning multi-storey car park
- Design echoes lattice patterns and intersections in the ironwork of nearby Victorian bridges
- More than 1,700 perforated mesh panels created using state-of-the-art software
- Car park featured in 'The beauty of car parks' on the front page of BBC website, and subsequently won best Architectural Achievement Award at the 2016 British Parking Awards

"We were extremely pleased with the end result. Maple wanted the façade to be as good as we did, and that pushed the project from both sides - it was all very collaborative."

Aedas, Associate
Alasdair Mealey

ADDENBROOKES CAR PARK

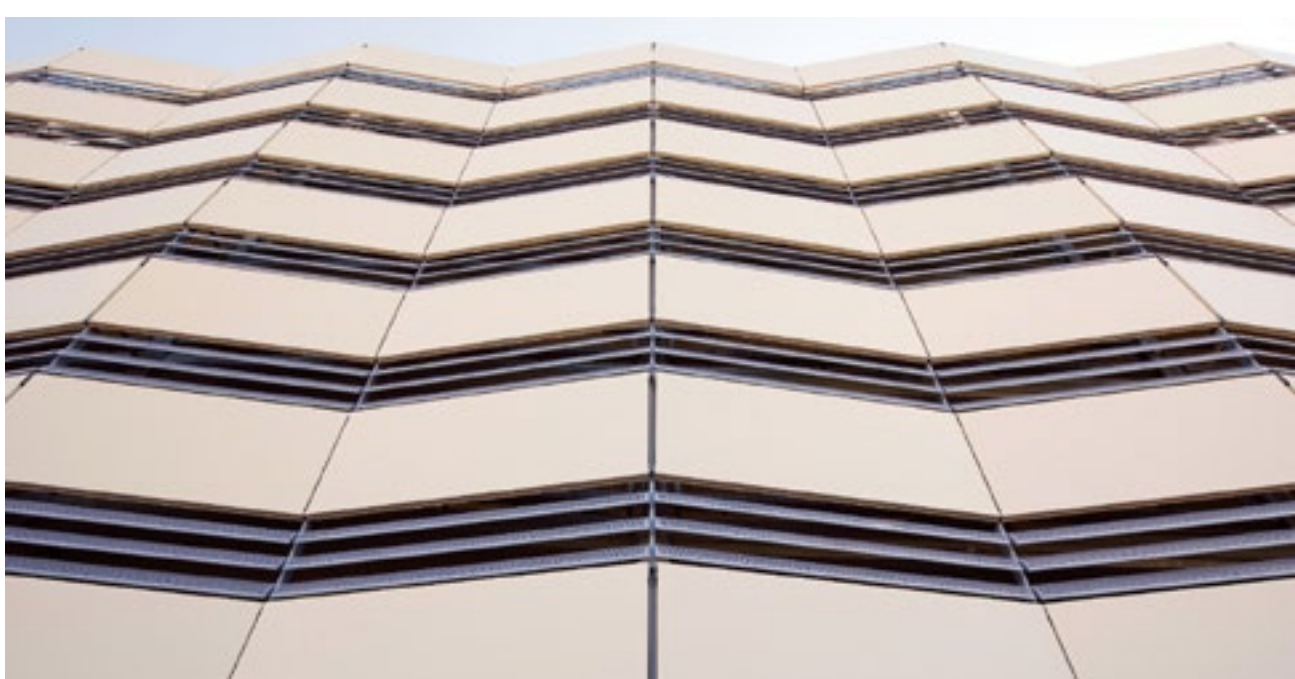
KEY FACTS

- Installation completed in 15 weeks
- Project appeared in NCP's Top 20 car parks
- 2,200 single-skin perforated panels fitted to car park
- Perforated fins fitted to three sides of the building – solid panels to one side
- Herringbone panels integrated with the fins



"The brief was to allow as much natural light as possible into the car park on three elevations. We had solid panels on the fourth elevation, where the nurses' quarters were situated."

Maple, Head Of Operations
Trevor McGrath





VW BRENTFORD CAR PARK

- KEY FACTS**
- Perforated louvres fitted around car park on four levels
 - Louvres increase ventilation and reduce pollution
 - Around 500 louvre blades fitted to building exterior

"We had to create a unique design for the car park façade, and a bespoke perforation pattern for the fins themselves. The fins were 1,200mm wide and 4.5m long - larger than normal."

Maple, Projects Director
Sean McGrath

GLASGOW FORT CAR PARK

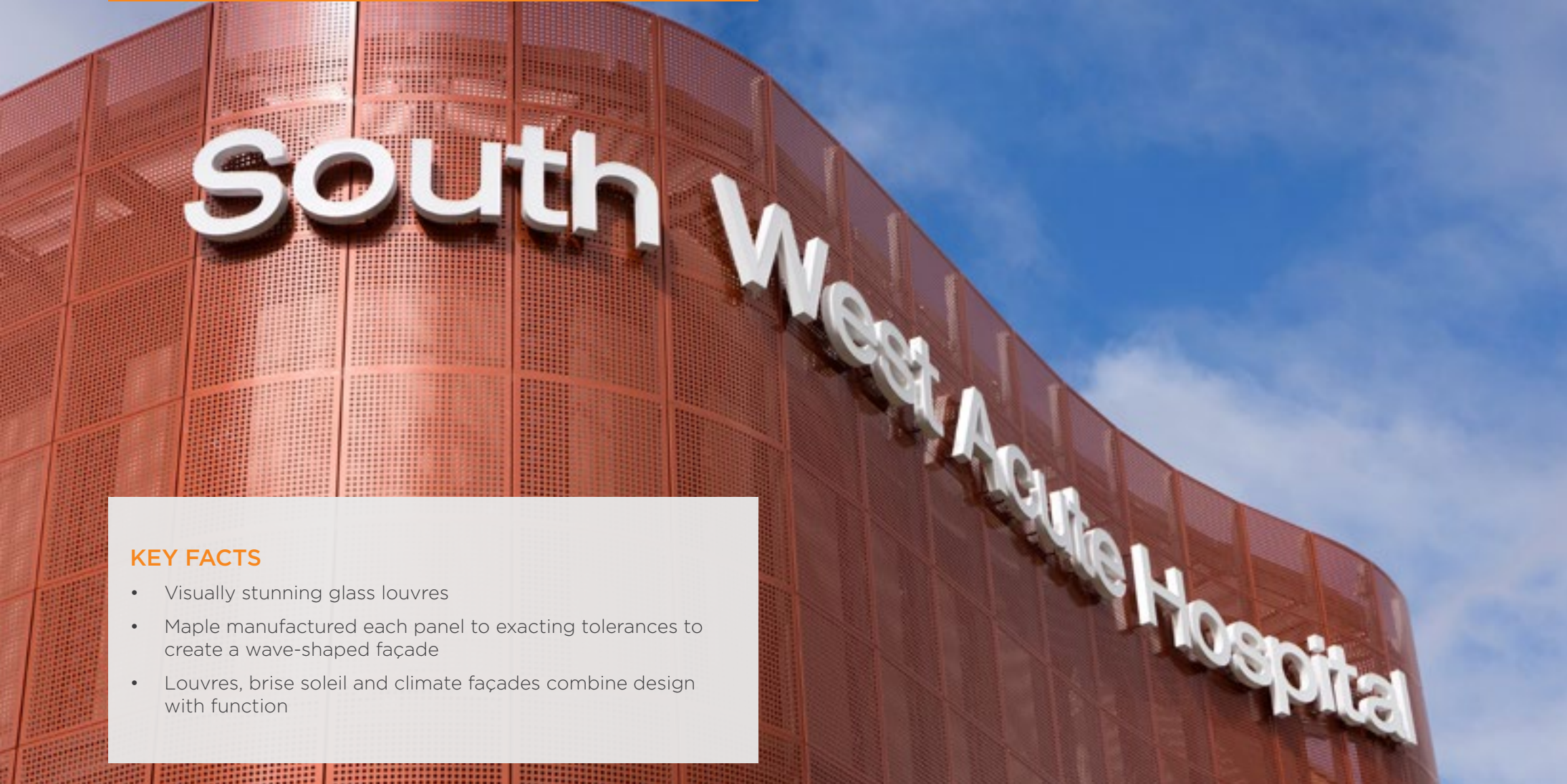
KEY FACTS

- A 'living wall' installation to transform Glasgow Fort Shopping Centre
- Multi-million pound development to improve shopper experience
- Brand new 601-space multi-storey car park
- Designed to increase parking capacity at Glasgow Fort Shopping Centre by 25%
- Uses a range of sustainable materials, including 700m² of Corten steel cladding, 1100m² of vertical timber fins, and 1200m² of curved timber fins spanning 75m

"The provision of an additional 600 free parking spaces is fantastic news in response to the demand from customers. We are committed to continuing to improve customer experience and the additional car parking and new guidance system will make it even easier to find a parking space."

Glasgow Fort, Centre Manager
Phil Goodman

SOUTH WEST ACUTE HOSPITAL CAR PARK

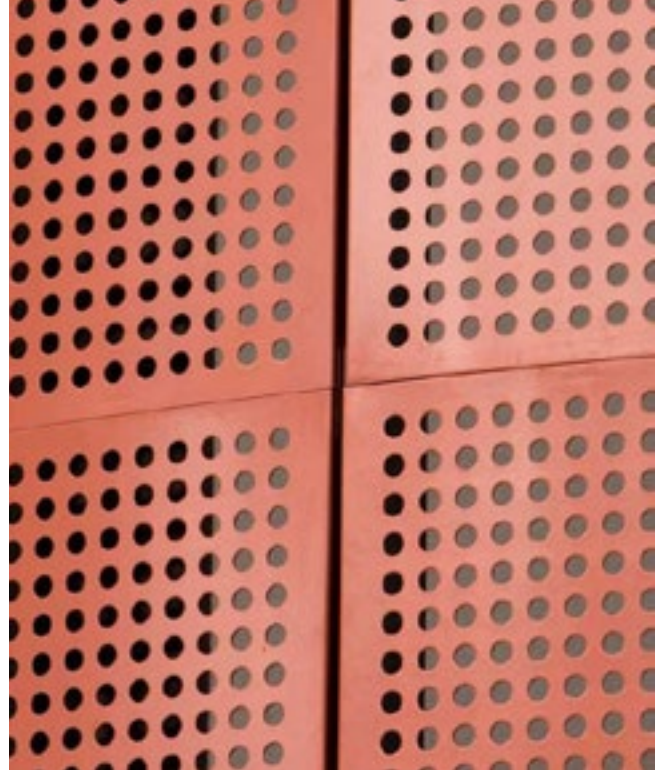


- KEY FACTS**
- Visually stunning glass louvres
 - Maple manufactured each panel to exacting tolerances to create a wave-shaped façade
 - Louvres, brise soleil and climate façades combine design with function



"Maple was the clear winner for this prestigious contract with a bespoke product and service package that satisfied the project's practical and aesthetic demands at a competitive cost."

FCC Elliott, Design Manager
David Ortiz

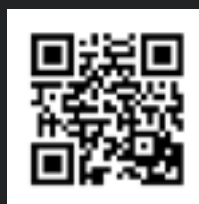




MAPLE

View our 'Why Maple' video at
www.maplesunscreening.co.uk/hubfs/Video/MaplesDiamondExperience.mp4

or scan the QR code



For more information, email
sales@maplesunscreening.co.uk

www.maplesunscreening.co.uk | 0161 456 6644

MAPLE



MAPLE

www.maplesunscreening.co.uk | 0161 456 6644