

# MAPLE

## NEW BAILEY SALFORD

NEW BAILEY CAR PARK



# FORMER PRISON SITE TRANSFORMED AS MAPLE REALISE ARCHITECT'S VISION TO CREATE AWARD-WINNING MULTI-STOREY CAR PARK

Maple helped give a leading firm of architects the freedom to express themselves on a prominent multi-storey car park development in Salford

## KEY FACTS

- The project won Best Architectural Achievement at the 2016 British Parking Awards
- Design inspired by local industrial buildings and Victorian lattice ironwork
- Collaborative approach transformed design vision into construction reality
- Maple designed, supplied and installed 1,700 panels
- Façade designed with natural lighting, ventilation and protection considerations

*"We were extremely pleased with the end result, Maple wanted the façade to be as good as we did, and that pushed the project from both sides it was all very collaborative. The car park has won awards, it's been featured on the BBC, and the response we get is always fantastic."*

Aedas Associate,

Alasdair Mealey





## BACKGROUND

Maple helped give a leading firm of architects the freedom to express themselves on a prominent multi-storey car park development in Salford.

Architects Aedas RHWL were tasked with creating a striking design that would add to the urban aesthetic of Salford's New Bailey development, which also includes retail and office space, apartments and a hotel.

Their imaginative design created a great concept - the nine-storey car park appearing to be wrapped in ribbons that echo the lattice

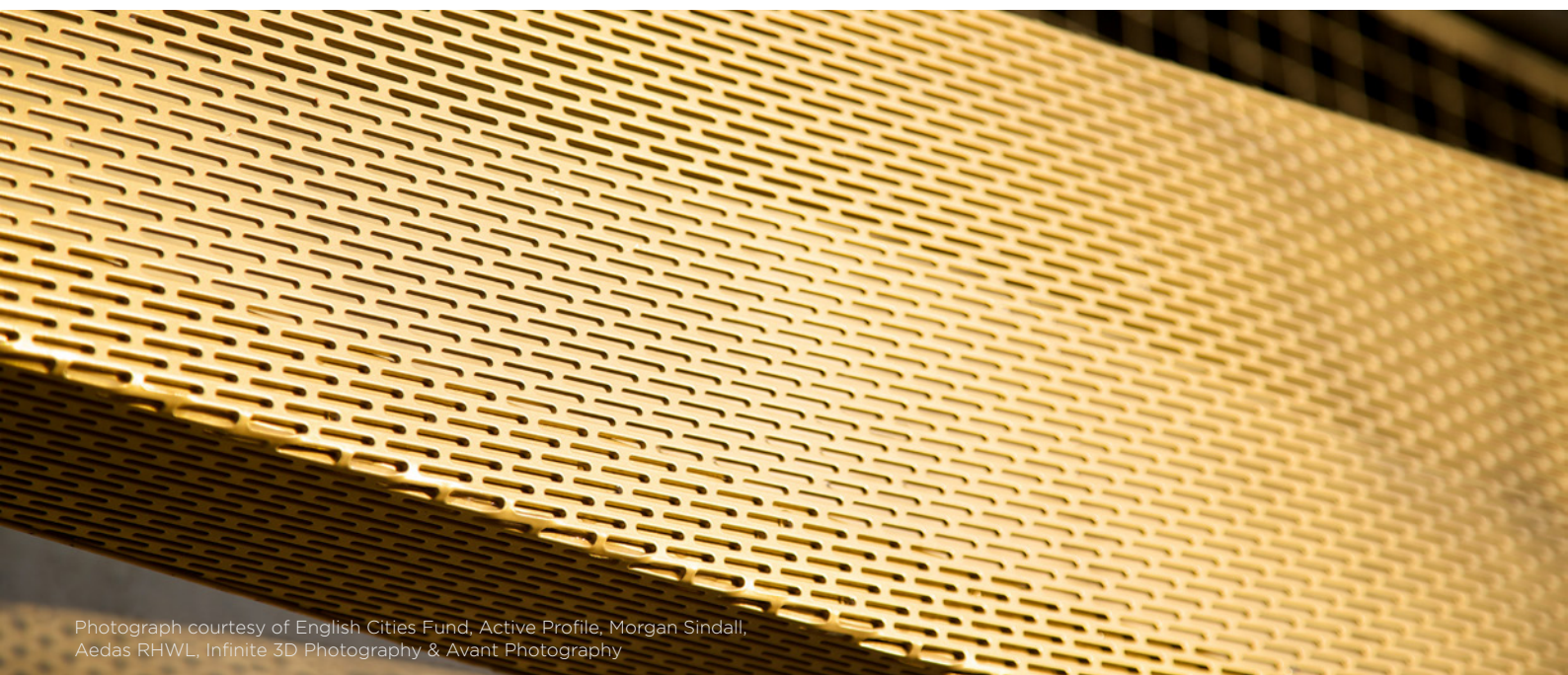
patterns and intersections in the ironwork of nearby Victorian bridges.

The design also had practical benefits, with the open façade allowing the building to be naturally ventilated and lit (reducing artificial lighting requirements), while still providing protection from the elements.

It was Maples task to transform this vision for the façade (which also had to curve round a landmark, 50m 'spire' and over a significant road junction), into reality.



Photograph courtesy of English Cities Fund, Active Profile, Morgan Sindall, Aedas RHWL, Infinite 3D Photography & Avant Photography



Photograph courtesy of English Cities Fund, Active Profile, Morgan Sindall, Aedas RHWL, Infinite 3D Photography & Avant Photography



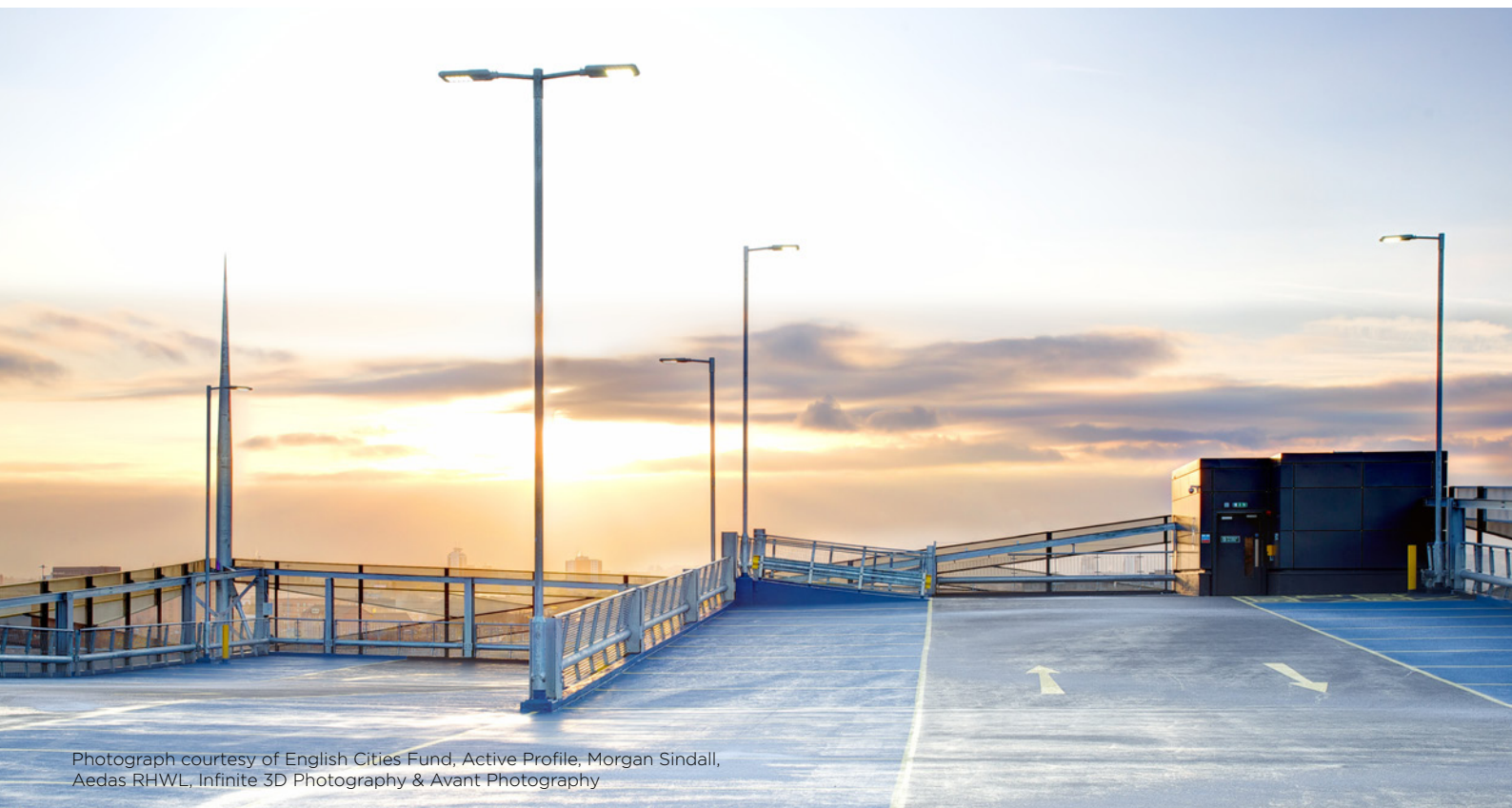
## SOLUTION

“We took the design to the next stage - building on the original vision, and transforming it into a fabricated product,” said Maple designer Adam Jones. “We worked closely with the architect at every stage to ensure we never lost the integrity of their design.”

Ironically, for a building on the site of the former New Bailey Prison, Maple’s expertise and collaborative approach, gave Aedas the ‘freedom’ to explore designs that wouldn’t otherwise have been considered possible.

Samples of all key components were produced and tested, before more than 1,700 perforated mesh panels were created using state-of-the-art software and fabrication methods. The panels were coated in different colours in line with the architects’ design, while attention to detail went one step further. Maple designed a process to use CSV imports to integrate the transfer of data between CAD and CNC machinery to streamline the location of fixing screws.

“All this significantly improved the efficiency of fabrication, and reduced the risk of human error,” added Adam.



Photograph courtesy of English Cities Fund, Active Profile, Morgan Sindall, Aedas RHWL, Infinite 3D Photography & Avant Photography

## RESULTS

Multi-storey car parks have traditionally been considered some of the ugliest buildings in the urban realm. However, shortly after being completed in 2014, the New Bailey car park featured in an article titled ‘The beauty of car parks’ on the front page of the BBC website. It subsequently won the Best Architectural Achievement at the 2016 British Parking Awards.

“We were extremely pleased with the end result,” said Aedas associate Alasdair Mealey. “Maple wanted the façade to be as good as we did, and that pushed the project from both sides it was all very collaborative.

“From our first concept sketches to the finished result, we don’t feel we compromised anything with the design. The car park has won awards, it’s been featured on the BBC, and the response we get is always fantastic.”

As part of the customer satisfaction process that takes place with every project, the architects scored Maple 9+ on design services, project support, meeting deadlines and quality of the final product.

“I found Maple to be excellent and I would definitely recommend them,” added Alasdair.